

Vyvo™

VYVO™



VYVO™

Experience the  
Evolution of Wellness



**BioSense**  
RING

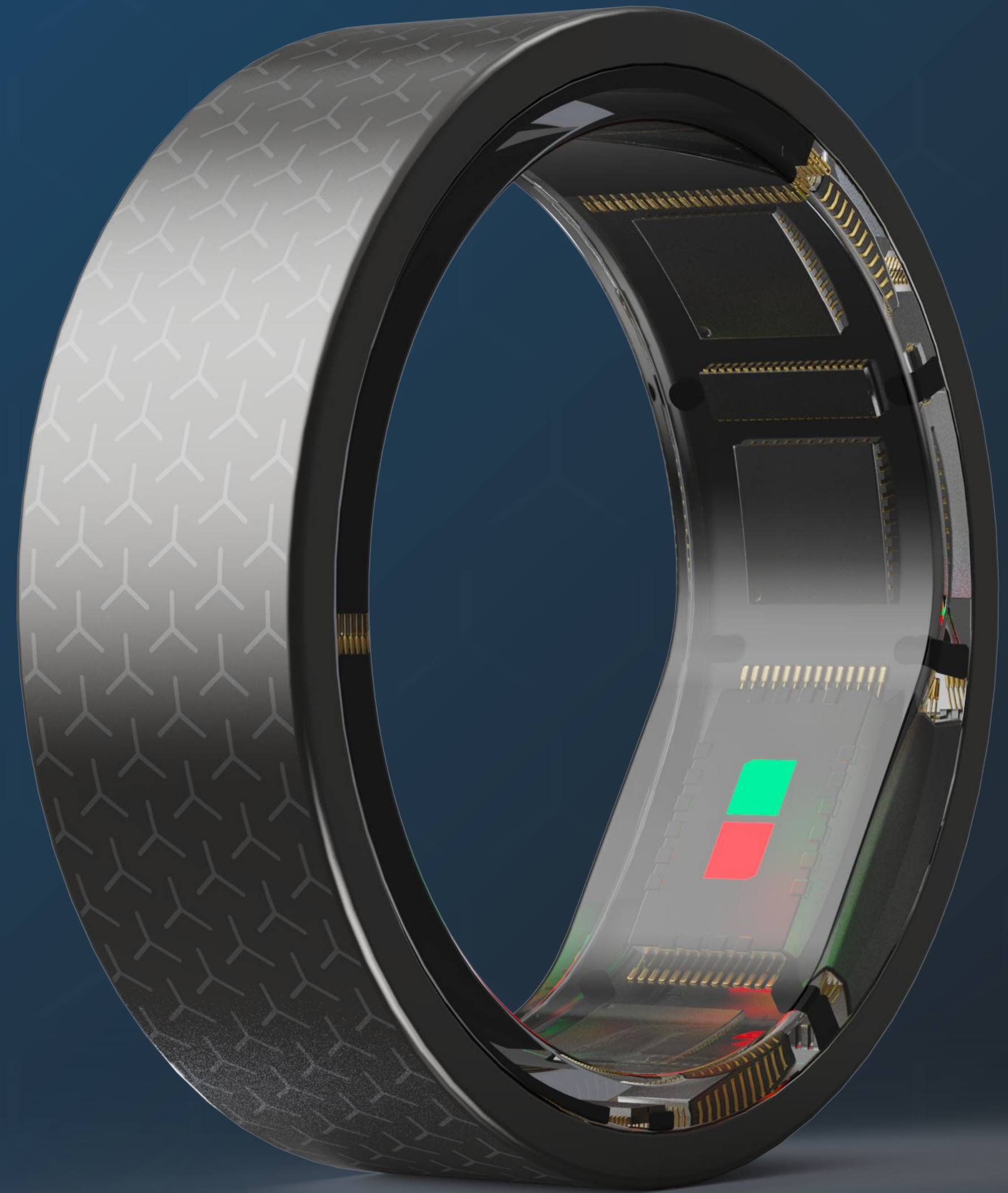
# THE NEW SHAPE OF WELLNESS



# The One Ring for Your Wellness Quest

With BioSense™ Ring, you can constantly monitor key metrics, day and night, for enhanced wellbeing.

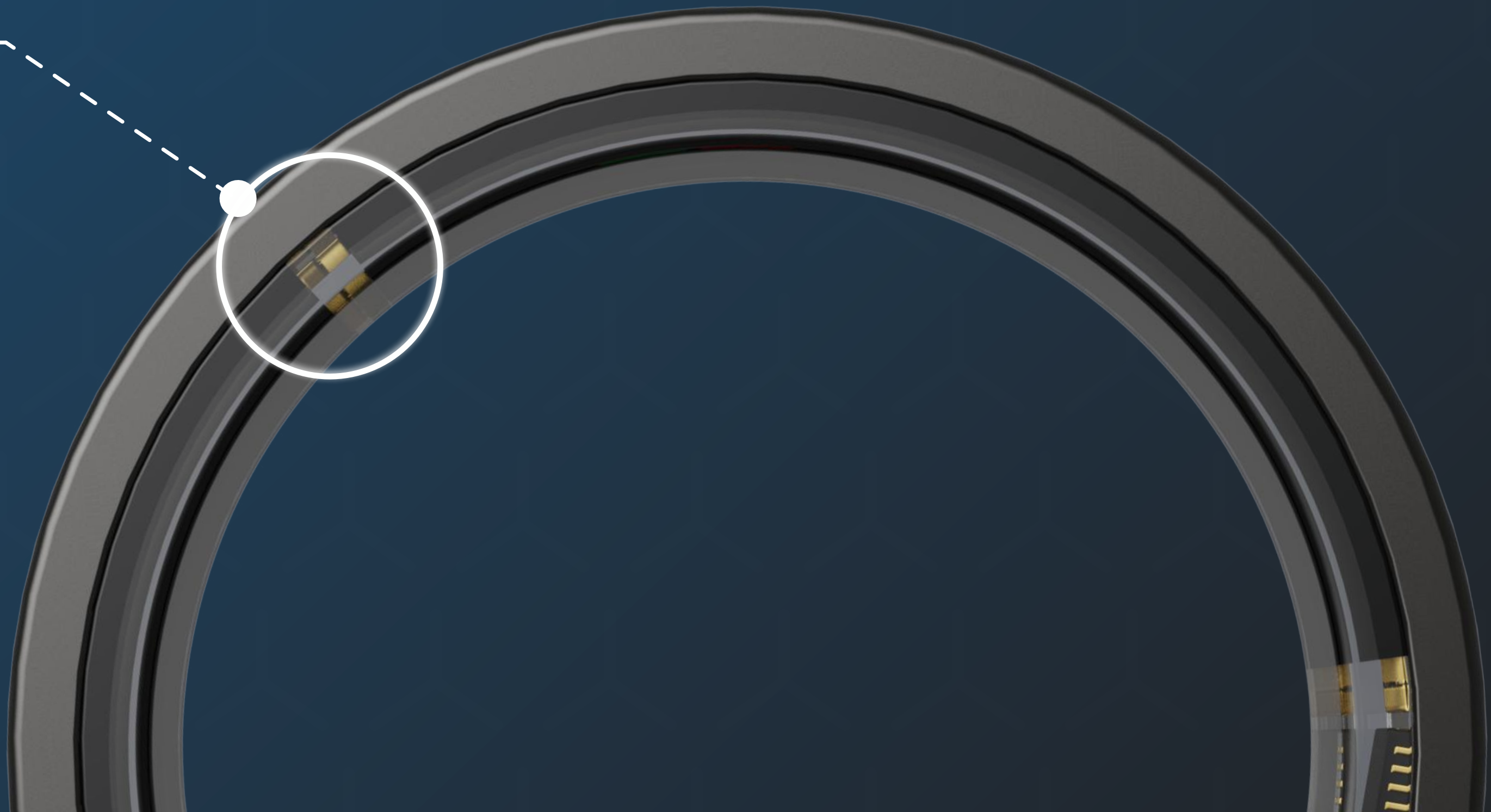
The epitome of innovation—right on your finger.



# Wellness Monitoring Wrapped Around Your Finger

## Precision Sensors

- Sleep recognition
- Real-time dynamic heart rate
- Blood oxygen monitoring



8 HRS



## Getting 'Round To Better Sleep

Good sleep is essential for great health. With the BioSense Ring, you can wake up every morning to a comprehensive analysis of every phase of your slumber, including REM and any disturbances.

15 bpm  
75 bpm

# 360 Degrees of Health

Monitor every beat, breath, burst of energy, and spike of stress by keeping the BioSense Ring on your finger. Leverage the insights to improve your health, day after day.



# Vital Insights Seamless Tracking

Experience the ultimate convenience in health monitoring—keep a precise digital track of your blood pressure and blood oxygen effortlessly.

SPO2



Blood Pressure





# Learn From Your Weekly Health Index

The **Health Index** is an overall weekly score representing your health status, with a maximum score of 100. Using artificial intelligence, Vyvo calculates your score every Monday based on the previous week's results in three different categories:

## Vitals

Includes cardiovascular analysis, respiratory analysis, and an overall analysis. (35% of the total score).

## Activity

Based on weekly activity level. (30% of the total score)

## Well-being

A combination of sleep, stress, energy, standing time, and BIA readings. (35% of the total score).

**Note:**

1. The Health Index is only available for Data NFTs Level 1 and up.
2. The Health Index will work regardless of whether or not a VeChain Wallet is entered.



# See Your Progress In The Vyvo Smart App

- Purpose-built for enhanced wellness management.
- Intuitive user interface.
- Reports data from the BioSense Ring.
- Simplifies daily progress tracking.
- Includes weekly Health Index.
- Eases capture of manual measurements.
- Features a Guest Area for others to experience Vyvo devices and access their Health Index report.





## Features

- Activity: Steps/Calories/Distance
- Heart Rate
- Stress
- Energy
- Breath Rate
- SP02
- Blood Pressure
- Sleep Quality

# Stylish. Elegant. Advanced. And Totally Vyvo.



1. Titanium alloy | 2. Silk-screened texture | 3. Hypoallergenic resin | 4. Sensors area



Thank you!