



# Influencer Marketing

# REWARDS PLAN

November 2025

Information subject to change. All prices are in USD. © 2026 Vyvo SocialFi Pte. Ltd. All rights reserved.

# WANT A SLICE OF THE AI TECH REVOLUTION?

*With the Vyvo SocialFi program,  
market expansion is truly in the people's hands.*



*Here, Members don't just join; they step in as  
market makers, not customers.*

**Co-creators of an economy  
built by the community, for  
the community**

Vyvo SocialFi is an  
**invitation-only community**  
united by a shared vision:  
**to experience**  
the latest tech innovations  
and transform them into  
**smart business.**



# Vyvo SocialFi is redefining the future of influencer marketing.

Imagine a business where anyone can build **social connections**, experience and share the latest **tech innovations like AI**, and generate **economic benefits** from a truly **booming market**.



 **NO** mandatory packages

 **NO** recurring purchases

 **NO** inventory to manage

 **NO** monthly sales requirement

# To participate in Vyvo SocialFi Rewards, all you need is to activate your SocialFi Hub Member Kit.

The SocialFi Hub is your all-in-one digital tool to

- Grow your community
- Automatically track and calculate your rewards

*\*The monthly option is not available yet*



1 MONTH  
Subscription  
**\$9.90\***

1 YEAR  
Subscription  
**\$99.00**

Thanks to AI, it also acts as your **Business CoPilot\*\***, helping you:

- Promote Vyvo's products and business
- Master essential business skills

*\*\*Feature expected to be released by January 2026*

# Vyvo SocialFi turns your connections and community into real income!

## With SocialFi, you can...

**Earn**  
instantly through

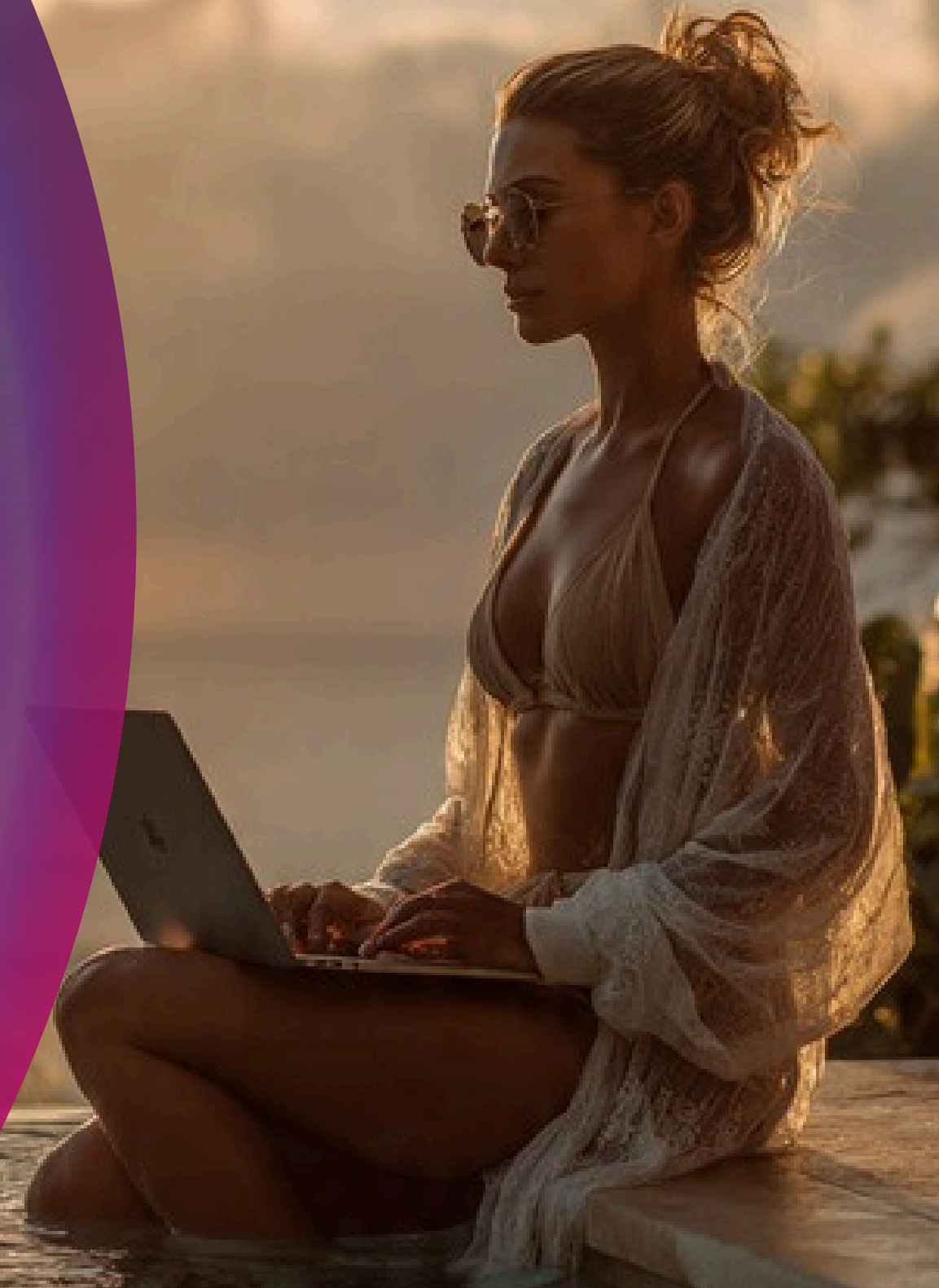
**Connection  
Rewards**

**Build** residual  
income through

**Community  
Rewards**

**Unlock** exclusive  
experiences with

**Lifestyle  
Rewards**



# Connections Reward

## General Rule

When you invite others to join the community, they become your **Connections**, and you become their **Connector**.

INSTANT  
REWARD

You get paid within seconds for every transaction, anytime, with **no limits**.

As a **Connector**, you'll earn

**10% Instant Rewards**

on every purchase made by your **Connections**, anytime and on any amount.



# Connections Reward

5 Weeks Challenge

This challenge is designed to help a **New Member Fast Start** their earnings in the business.



## PROMO

Until March 2, 2026

*From the Hub Console activation date, each Member enters a qualification window that lasts through the end of the fifth full consecutive Epoch\*.*

\* Includes the remaining days of the activation Epoch plus the next 5 consecutive Epochs/weeks.

## Connections Reward

5 Weeks Challenge

During this window the number of sales in your Connections set the Connection reward percentage for all your direct sales as follows:

SALES	CYCLE VALUE	EXTRA WEEKS
Fewer than 3 sales** or less than 900 HV	BASE 10%	NO
At least 3 sales** and at least 900 HV	BUILDER *** 15%	YES 3 WEEKS
At least 5 sales** and at least 1,500 HV	DEVELOPER *** 20%	YES 5 WEEKS

\*\* Sales must be made to different users

\*\*\* The earned percentage applies **retroactively** to all sales made during the qualification window and then to all sales made in the extension weeks.

# Community Rewards

The power  
of Residual  
Income

## Your Reward is simple

### General Rule

You and your  
Connections are  
part of a bigger  
your **COMMUNITY!**

For every  
cycle\* of

**\$100**

*in your Hubs*



You'll earn  
between

**5 & 9 USD**

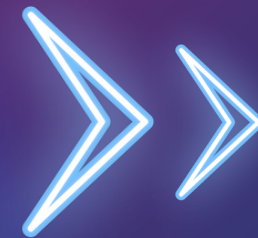
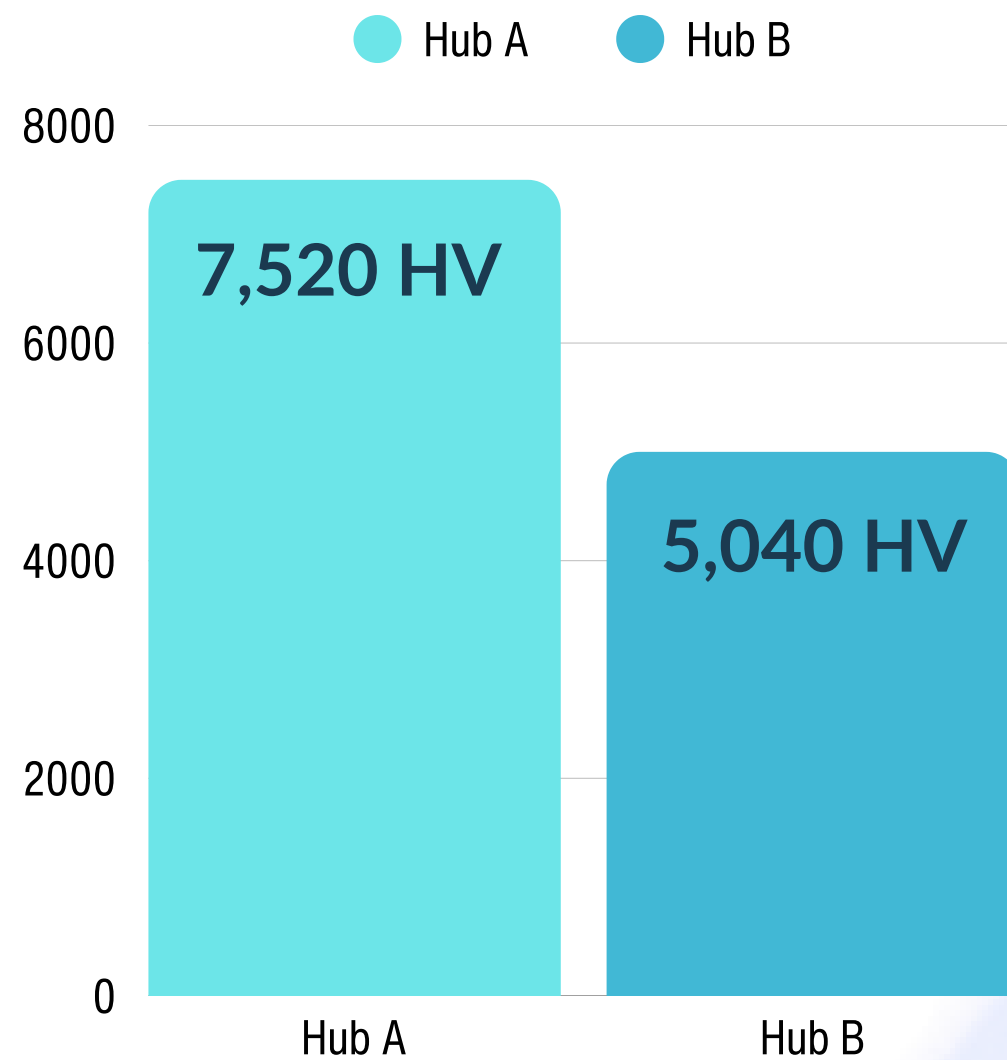
*That's your  
cycle value*



\*A \$100 cycle occurs when there is \$100 in Hub A and \$100 in Hub B

# Community Rewards

## Cycle Value Example



The number of full cycles is based on the lower volume, divided by 100.



So:  **$5,040 \div 100 = 50$  full cycles**

*The cycle value of 50 cycles falls in the 30-79 range, so each cycle pays \$6*



Therefore, your reward is:

**$50 \times \$6 = \$300$**

*Unpaid volume is carried over as Hub Savings:*

Hub A:  $7,520 - 5,000 = 2,520$  HV  
Hub B:  $5,040 - 5,000 = 40$  HV

# Community Rewards

## The Cycle Value

Your Cycle Value is based on the total number of cycles you generate during each Epoch.

*\*Value subject to fair policy, otherwise the amount is \$7*

## Cycle Value by Performance Tier

TOTAL CYCLE / EPOCH	CYCLE VALUE
1 - 4	\$ 5
5 - 14	\$ 5.3
15 - 29	\$ 5.6
30 - 79	\$ 6
80 - 149	\$ 6.3
150 - 299	\$ 6.6
300 - 799	\$ 7
800 - 1499	\$ 7.3*
1500 - 2999	\$ 7.6*
3000 - 7999	\$ 8*
8000 - 14999	\$ 8.5*
>= 15000	\$ 9*

# Community Rewards

## Recognition Rank

Your total number of cycles per Epoch also determines your Recognition Rank

TOTAL CYCLE / EPOCH		RANK
1 - 4		Rising 1 Star
5 - 14		Rising 2 Star
15 - 29		Rising 3 Star
30 - 79		Premier 1 Star
80 - 149		Premier 2 Star
150 - 299		Premier 3 Star
300 - 799		Elite 1 Star
800 - 1499		Elite 2 Star
1500 - 2999		Elite 3 Star
3000 - 7999		Ambassador 1 Star
8000 - 14999		Ambassador 2 Star
>= 15000		Ambassador 3 Star

# Lifestyle Rewards



Every year, a new edition of the Lifestyle Holiday rewards qualifying Members with unforgettable experiences. If you qualify, you're invited!

Breathtaking destinations

Exclusive experiences for achievers

Connection with Future Makers & Vyvo executives

Celebrate your growth with community

Earned through Lifestyle Points

Scan to explore the latest edition and how to qualify.



The logo for the Prestige Club, featuring a stylized crown icon made of white diamonds.

# Prestige Club

Where Excellence Meets Experience

When a Member qualifies at the **Ambassador Rank**, they enter the **Prestige Club**; an exclusive tier of global achievers.

As a Prestige Member, you'll enjoy VIP treatment all year long and at every major Vyvo event. From recognition to connection, your success is celebrated in style.

Once a year, all Prestige Members gather in a hand-picked luxury location for an unforgettable experience.

**World-class destinations**

**Strategy, recognition & renewed focus in elite settings**

**Future Makers Council access & private sessions with Vyvo Founders**

**Exclusive VIP perks at every major event**

Scan to unlock more about the Prestige Club experience.



# Terms

## ◆ Active

You are considered Active if you own a Hub Console Pro.

## ◆ Connection

A Connection is a Member linked to your Hub Console.

## ◆ Connections Placement

Use your app's invitation codes to add new connections. Each code assigns them to either Hub A or Hub B, depending on where you choose to place them when sharing.

## ◆ Community Hub Savings

Any excess unpaid volume remaining after the Community reward calculation will be carried over to the next Epoch as Hub Savings. This amount may apply to either one Hub or both. Hub Savings will continue to accumulate without limitation, provided that the Hub Console PRO is active.

## ◆ Community Matched Cycle (Cycle)

A complete matched unit of 100 Hub Volume on each Hub within the same Epoch. Only complete matched Cycles on both Hubs are eligible for the calculation of the Community Reward. Any Hub Volume that does not form a complete matched Cycle on both Hubs for that Epoch will be recorded as Community Hub Volume Savings.

## ◆ Cycle Value

The amount paid per Cycle for the Community Reward. The Cycle Value ranges from \$5 to \$9 per Cycle, depending on the total number of eligible Cycles achieved within the same Epoch, as defined in the applicable Cycle Value table.

## ◆ Epoch

An Epoch refers to a specific period, typically lasting seven days, in which the community's activity generates all rewards. Please note that the Company retains the right to alter the duration of any Epoch.

## ◆ Epoch Cycle Closing

An epoch typically spans a seven-day period and resets every Tuesday at 00:00 AM SGT.

- Los Angeles (PST, UTC-8) – Monday at 8:00 AM
- Miami (EST, UTC-5) – Monday at 11:00 AM
- Rome (CET, UTC+1) – Monday at 5:00 PM
- Moscow (MSK, UTC+3) – Monday at 7:00 PM
- Bangkok (ICT, UTC+7) – Monday at 11:00 PM
- Taipei (CST, UTC+8) – Tuesday at 12:00 AM
- Tokyo (JST, UTC+9) – Tuesday at 1:00 AM
- Singapore (SGT, UTC+8) – Tuesday at 12:00 AM. *(base reference time)*

**Note:** Time zones may shift due to daylight saving time.

The company also reserves the right to modify the closing time at its discretion.

### ❖ Ethical Positioning

It is forbidden to attempt to 'game' the system to generate more rewards. Any Influencer attempting to do so may, at the Company's sole discretion, have their account terminated. The Company reserves the right to deduct this amount from an Influencer's rewards or to take action to seek monetary damages up to two times the fraudulent reward paid plus any legal costs.

### ❖ Hub Console

A Hub Console is a digital space in the Vyvo SocialFi App that contains a user's connections and the HV. There are two types of the Hub Console, Free and Pro.

### ❖ Hub Volume

All purchases made within your Hubs during an epoch generate Hub volume (HV).

### ❖ Minimum Eligible Matched Cycle Volume

To earn the Community Reward, an Influencer must complete at least one matched Cycle of 100 Hub Volume on each Hub within the same Epoch. If a full matched Cycle is not achieved, the volumes will be carried over as Hub Saving and considered in the calculation for the next Epoch.

### ❖ Personal Cap

The maximum USDV reward that an Influencer can earn as Community Reward is 250,000 USDV per Epoch.

### ❖ Reward Flushes

If an Influencer does not renew their Hub Console PRO within the 30-day grace period following its expiration, they will lose Active status. As a result, all Rewards and volumes accumulated during that Epoch will not be counted. In addition, the Company reserves the right to flush the current Hub Savings.

### ❖ Referrer or Connector

A Referrer (or Connector) is a Member who owns a Hub Console and refers another Member or Customer into their Hubs, who then becomes their Connection.

### ❖ Rewards Calculation

Some rewards are computed instantly and become available within a few seconds, while others are calculated on a weekly basis, following the Epochs. The results of these calculations are finalized, and the corresponding amounts become accessible in your app the day after the Epoch closes.

### ❖ Total Rewards Cap\*

The maximum reward amount in a single Epoch is 35% of the total sales generated within the Vyvo SocialFi Rewards Program during the same Epoch. If the amount exceeds this limit, a CAP will be applied by multiplying the earnings by the 'CAP share value.'

### ❖ Fair Policy

The Fair Policy is triggered when the following conditions are met:

1. The new volumes generated in the Power Hub represent less than 20% of its own savings volume.
2. The new volumes generated in the Power Hub are less than 20% of the new volumes generated in the other Hub.

*\*Any amount in excess will be deducted proportionately between all Influencers.*

**If you want to seize the opportunity  
in the tech and AI market**



**IS FOR YOU**



Connect with our  
Vyvo Community Online